

# Analysis & Consulting

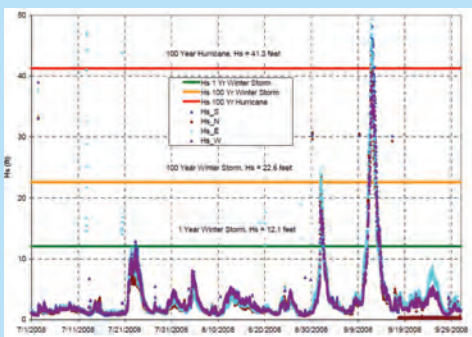
BMT provides data management and technical analyses of data acquired by various integrated marine and structural integrity monitoring systems. We provide consulting to marine industry and government agencies on all aspects of interpretation and understanding of marine systems through the prism of real data.

The Analysis and Consulting Group has expertise in the following areas:



## Client Data Center (CDC) for Data Management

- Automatic data transfer from an offshore platform to a secure server controlled by BMT.
- Full-scale data dissemination back to the client and authorized client's subcontractors through secure Internet protocols.
- Automatic data post processing, visualization, trending, and reporting.
- Data archiving.

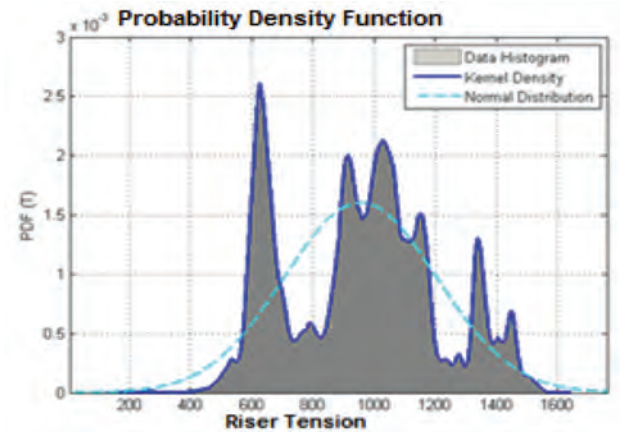


## Regular and Periodic System Health Reporting

- Addressing instrumentation health quality issues based on periodic examination of the data.
- Short and long term trend statistics for environmental and global motion data, including VIM.
- Providing feedback to Service and Upgrades Group for most efficient and effective instrument maintenance.

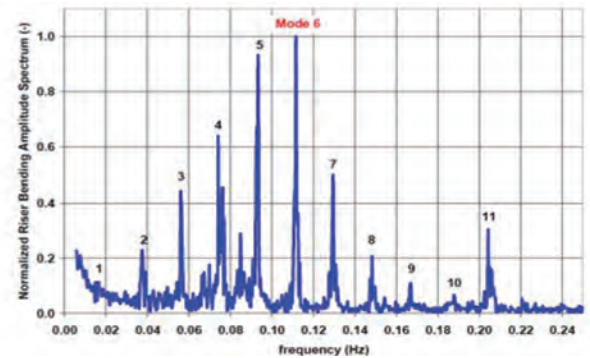
## Special Studies and Forensic Analyses

- Long-term riser and tendon tension alarm identifications and analyses.
- Hurricane wave analyses and evaluation of numerical storm wave models.
- Riser bending moment evaluation using Artificial Neural Network models.
- Forensic detection and investigation of offshore incidents during hurricane seasons.
- Long-term environmental KPI analyses for multiple offshore platforms.
- Long-term trend analyses for FPSO system behavior.



## Joint Industry Projects Data Analyses

- Highly compliant Riser Large Scale Model Test
- Multi and high-mode Riser VIV Data Acquisition System and Detection
- Oryx-Neptune Spar Performances
- Genesis Spar Performances
- Boomvang Spar Performance



Through our work across multiple clients from the oil and gas industry, we have built a reputation for excellence by providing fact-based and thoughtful interpretation of complex marine data.

