

# CDC\_Visual

## Interactive Trends Visualization for floating offshore platform data acquired by custom-engineered Integrated Marine Monitoring Systems (IMMS)

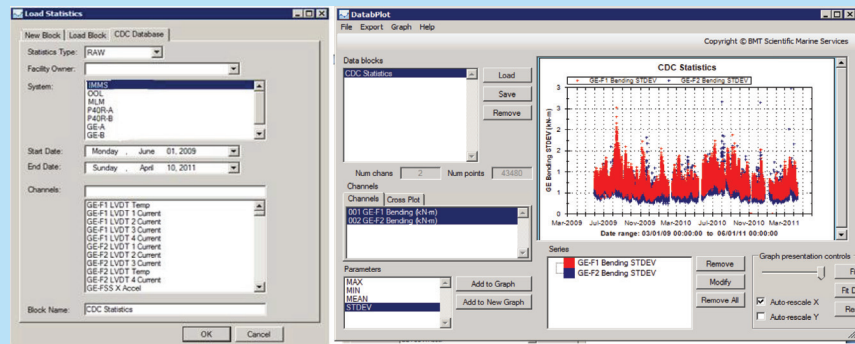
BMT has launched a new Statistics Data Trend Visualization service, CDC\_Visual, for our clients who already have their IMMS data stored on the BMT CDC\_Data server. CDC\_Visual is offered as an individual subscription for interactive and secure access to client proprietary statistics data.

This service combines the access to a platform-specific statistical data base that contains basic statistics based on measured or post processed time series data. In addition to the most current data, all historical data available on the CDC Data server can be visualized as well.

CDC\_Visual enables statistics data to be visualized using the BMT proprietary graphical user interface which interacts seamlessly with the database. The access to the statistics data is secure, transparent to users, easy and straightforward.

Data Visualization Service can be securely accessed remotely and the program appears like it runs on a local computer. Before purchasing the first subscription, a trial version of the full service can be provided for a limited time. Typical CDC\_Visual screens are shown in the figure.

This service provides a significant addition to the existing BMT CDC Data services which hosts more than fifty existing BMT designed and installed IMMSs. The service is particularly useful to marine assurance personnel and top level management to visualize trends for relevant IMMS data during or after a storm or other significant event.



CDC\_Visual Screenshots

### Features:

- Statistical trends can be accessed any time for any available data set specifies by a user.
- Remote access does not require installation of any additional software on the user computer, other than what is already available through MSWindows based operating system. The service relies on the "RemoteApp" a feature that is a part of the Windows Remote Desktop Protocol (RDP). This feature enables accessing specific applications on the BMT servers that are enabled and only controlled by the BMT IT system administrator. Therefore, clients do not need to worry about software maintenance and updates.

### Customizable Options:

- Line Type or Scatter
- Color for lines and points
- Chart axes can be re-scales
- Charts can be easily copied to clipboard or saved in a variety of graphical formats for importing into a PowerPoint or Word document
- The selected statistics trend data can be saved as CSV (Excel compatible) file for additional analyses